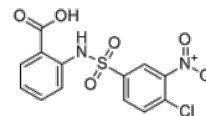


**Product Name** : CTPI-2  
**Cat. No.** : PC-35588  
**CAS No.** : 68003-38-3  
**Molecular Formula** : C<sub>13</sub>H<sub>9</sub>ClN<sub>2</sub>O<sub>6</sub>S  
**Molecular Weight** : 356.733  
**Target** : Other Targets  
**Solubility** : 10 mM in DMSO



## Biological Activity

CTPI-2 (SLC25A1 inhibitor CTPI-2) is a novel specific **SLC25A1** inhibitor with K<sub>d</sub> of 3.5 μM, CTPI-2 is synthetic lethal with cisplatin or with EGFR inhibitor co-treatment and restores antitumor responses both in vitro and in vivo. CTPI-2 disrupts self-renewal and sphere-forming capacity of the indicated tumor cells relative to monolayer cultures, demonstrates broad activity on lung CSCs, inhibiting mitochondrial respiratory activity, self-renewal and matrix invasion. CTPI-2 inhibits tumor growth in in vivo models of NSCLC.

## References

Fernandez HR, et al. *Cell Death Differ.* 2018 Jul;25(7):1239-1258.

**Caution: Product has not been fully validated for medical applications. Lab Use Only!**

E-mail: tech@probechem.com